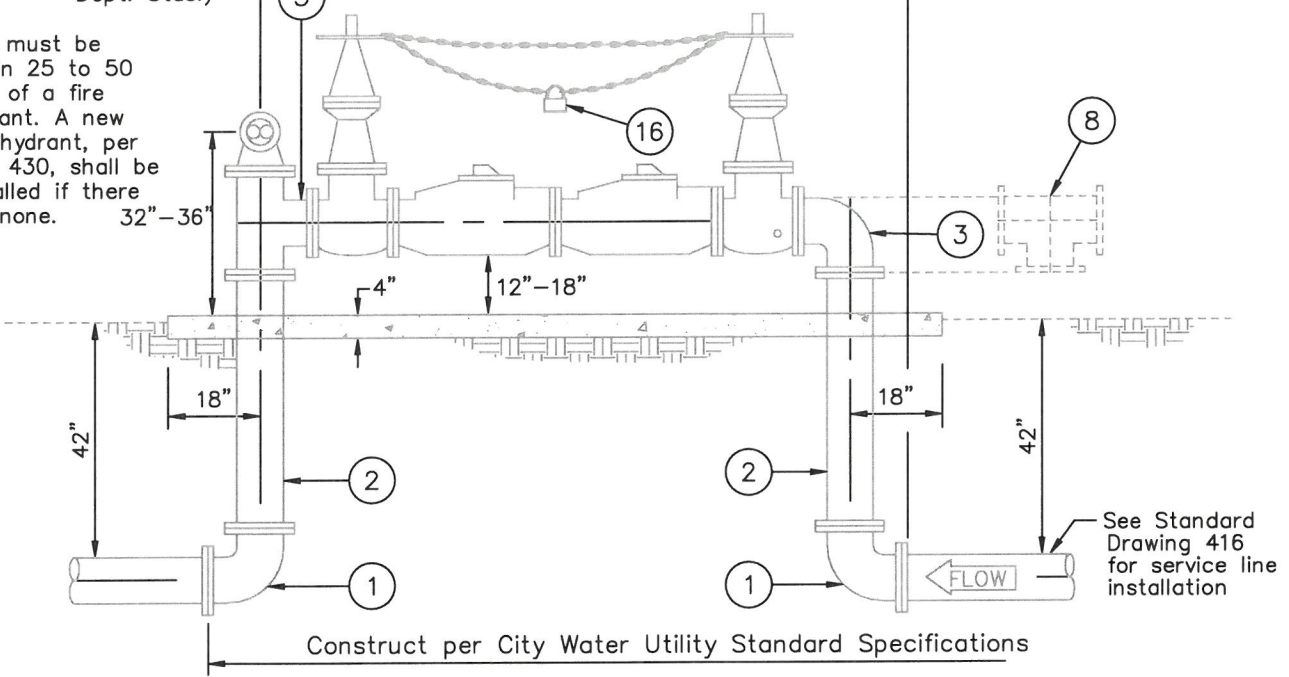


Private system
(per Fire
Dept. Stds.)

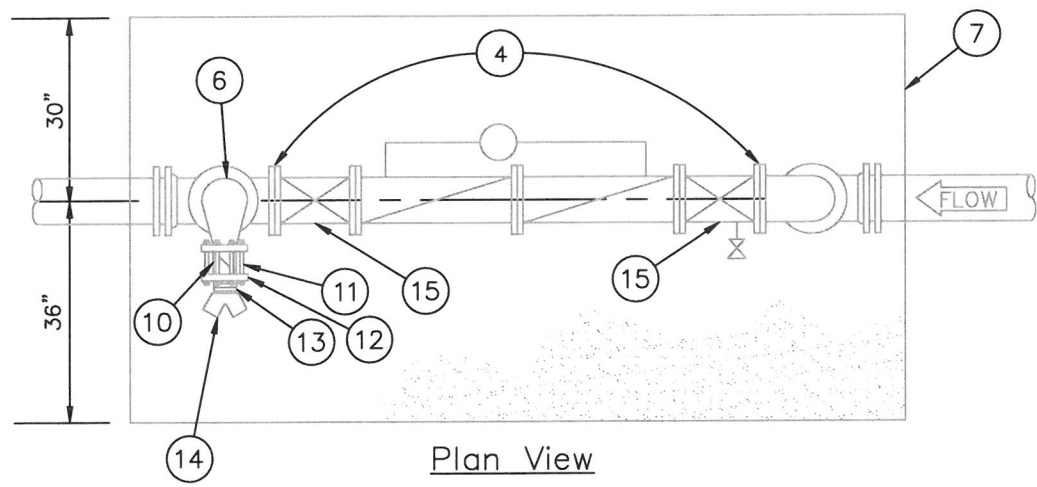
Begin private system responsibility

End of City of Norco
system responsibility

FDC must be
within 25 to 50
feet of a fire
hydrant. A new
fire hydrant, per
Std. 430, shall be
installed if there
are none.



Elevation



Plan View

REVISED DATE <u>07.08.24VS</u> 	CITY OF NORCO PUBLIC WORKS DEPARTMENT – WATER UTILITY	DRAWN <u>SJN</u> DATE <u>12-06-16</u>
	FIRELINE DOUBLE CHECK DETECTOR ASSEMBLY	STD. NO. 451
	APPROVED <u>[Signature]</u> DIRECTOR OF PUBLIC WORKS	DATE <u>7/8/24</u>

List of Materials

Item	Description
1	90° D.I. elbow, FLG.
2	D.I.P spool, class 53, FLG. (order to size).
3	90° compact D.I. elbow, FLG.
4	Double detector check assembly.
5	Compact D.I Tee, FLG.
6	Pipe size X 4" - 90° D.I. required elbow, FLG. (see Note 3 hereon).
7	Concrete pad, class 520-C-2500
8	Insert compact D.I. tee for combination fire line and domestic service.
9	1/8" full face cloth inserted rubber flange gasket.
The following items must have pre-approval and final inspection by Fire Marshal.	
10	4" UL/FM wafer rubber-seated check valve.
11	8-5/8" X 7" L threaded-studs with 16 nuts, plain.
12	4" X 9" C.I threaded companion flange.
13	4" X 4"L galvanized nipple, I.P.T.
14	4" X (2) 2-1/2" Y bronze-straight pattern fire dept. connection (FDC) with plastic caps.
15	Tamper switch.(Per current NFPA 72 California Fire Code)
16	Owner's chain and breakaway padlock(s).

Notes:

- See Section 3 of these Specifications for approved manufacturers of double detector check assemblies and required pressure principle detector assemblies by-pass meters, testing requirements, locations of assemblies and other requirements.

The detector (by-pass) meter shall be 5/8" or 3/4" normal size with bronze main case and bottom plate and shall have a straight read magnetic driven register capable of detecting consumptive use in cubic foot increments. (See Section 4-12 from meter requirements. Prior to installation the contractor is required to submit the proposed meter to the City of Norco for review and approval. Meters can be purchased from the City per the City's fee schedule.)

- See Section 5-10 of these Specifications for fire line assembly painting requirements.
- All bolts and nuts except item 11 on sheet 1 are to be zinc plated (brass is not acceptable).
- Contractor shall submit to Engineer for approval the proposed location of fire line assembly prior to construction. Assembly shall be visible from street and within 50 feet of an area accessible by fire department vehicles.
- Fire line assembly installed in easements road and streets without curbs or with rolled curbs shall be protected by guard posts per Standard Drawing 431. The number and specific location of such posts will be determined by the Engineer if not shown on the plans.
- See Section 5-03.04 of these Specifications for polyethylene protective wrapping requirements.
- New or updated signage may be required by Fire Marshal.
- The location and required equipment for FDC and tamper switches shall be determined by the Fire Marshal.

REVISED DATE 07.08.24VS	CITY OF NORCO PUBLIC WORKS DEPARTMENT - WATER UTILITY	DRAWN <u>SJN</u> DATE 12-06-16
	FIRELINE DOUBLE CHECK DETECTOR ASSEMBLY	STD. NO. 451 2 of 2
	APPROVED DATE <u>7/8/24</u> DIRECTOR OF PUBLIC WORKS	