

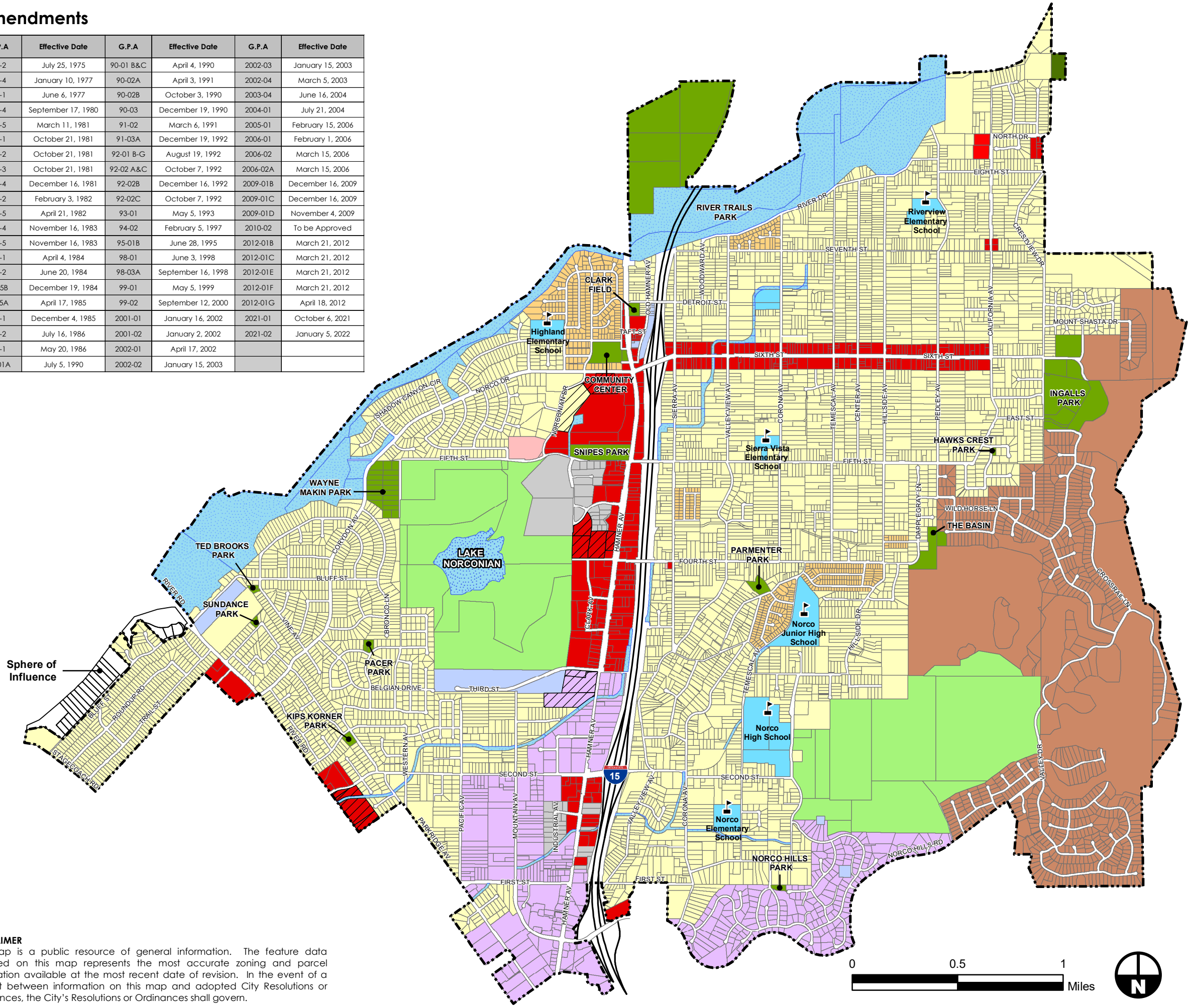
# Amendments

G.P.A	Effective Date	G.P.A	Effective Date	G.P.A	Effective Date
74-2	July 25, 1975	90-01 B&C	April 4, 1990	2002-03	January 15, 2003
76-4	January 10, 1977	90-02A	April 3, 1991	2002-04	March 5, 2003
77-1	June 6, 1977	90-02B	October 3, 1990	2003-04	June 16, 2004
80-4	September 17, 1980	90-03	December 19, 1990	2004-01	July 21, 2004
80-5	March 11, 1981	91-02	March 6, 1991	2005-01	February 15, 2006
81-1	October 21, 1981	91-03A	December 19, 1992	2006-01	February 1, 2006
81-2	October 21, 1981	92-01 B-G	August 19, 1992	2006-02	March 15, 2006
81-3	October 21, 1981	92-02 A&C	October 7, 1992	2006-02A	March 15, 2006
81-4	December 16, 1981	92-02B	December 16, 1992	2009-01B	December 16, 2009
80-2	February 3, 1982	92-02C	October 7, 1992	2009-01C	December 16, 2009
81-5	April 21, 1982	93-01	May 5, 1993	2009-01D	November 4, 2009
83-4	November 16, 1983	94-02	February 5, 1997	2010-02	To be Approved
83-5	November 16, 1983	95-01B	June 28, 1995	2012-01B	March 21, 2012
84-1	April 4, 1984	98-01	June 3, 1998	2012-01C	March 21, 2012
84-2	June 20, 1984	98-03A	September 16, 1998	2012-01E	March 21, 2012
84-5B	December 19, 1984	99-01	May 5, 1999	2012-01F	March 21, 2012
84-5A	April 17, 1985	99-02	September 12, 2000	2012-01G	April 18, 2012
85-1	December 4, 1985	2001-01	January 16, 2002	2021-01	October 6, 2021
86-2	July 16, 1986	2001-02	January 2, 2002	2021-02	January 5, 2022
87-1	May 20, 1986	2002-01	April 17, 2002		
90-01A	July 5, 1990	2002-02	January 15, 2003		



## Legend

- Land Use Designations**
- RA (Residential Agricultural)
  - RL (Residential Low)
  - IN (Institutional)
  - CO (Commercial Office)
  - CC (Commercial Community)
  - I (Industrial)
  - PAD (Preservation and Development)
  - A (Agricultural)
  - S (Existing Schools)
  - P (Parks)
  - HS (Hillside Areas)
  - WR (Water Related)
  - PL (Public Lands)
  - SP (Specific Plan)
  - Sphere of Influence
  - HDO (Housing Development Overlay)
  - City Boundaries



**DISCLAIMER**  
 This map is a public resource of general information. The feature data provided on this map represents the most accurate zoning and parcel information available at the most recent date of revision. In the event of a conflict between information on this map and adopted City Resolutions or Ordinances, the City's Resolutions or Ordinances shall govern.



# CITY OF NORCO GENERAL PLAN LAND USE MAP

City Council Resolution No.: 2007-23  
 Date: May 2, 2007  
 Updated: April 5, 2022